

# PREMIUM REMOTES POWERED BY SW SUN CONTROL

## SMART LINE Remotes

5 Channel

### TECHNICAL DATA

Power Supply	3V Lithium Battery (CR2023)
Battery Life	2 Year
Frequency	434.15 MHz
Remote Range (feet)	65



### PROGRAMMING REMOTES

Remotes enable the user to control one or more motors, installed on awnings and screens. It is possible to set them up in order to create group commands and let more motors work simultaneously.

The radio signal is shown by the transmission LED. If the LED doesn't blink after the button pressure, then the battery has to be replaced.

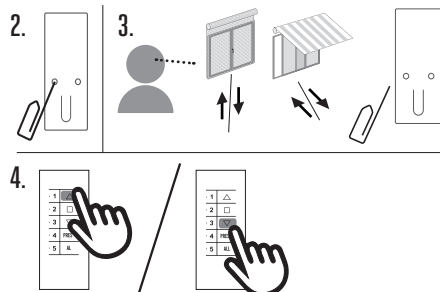
**PLEASE NOTE: Do not use motors with remote controls in areas with risks of radio disturbs over the norm (i.e. airports or radio repeaters). These units may also be disturbed by telecommunication and/or transceiver systems with the same frequency.**

#### PROGRAMMING Remote

**CAUTION:** If multiple motors have to be installed, it is important to power on one motor at time during the first programming session, in order to avoid any interferences with the motors.

1. Power on the motor to be paired/ programmed.
2. Press and hold **TX** until the motor starts moving.
3. Check the rotation of the motor, then release **TX** (the motor stops).
4. Within 5 seconds press the corresponding button (i.e. **UP** if the motor rotated up or **DOWN** if vice versa).

The remote is now programmed and the rotation of the motor is now synchronized.



#### ADDING Remote

2. Press and hold **TX** of a programmed remote until the motor starts moving.
3. Check the rotation of the motor, then release **TX** (the motor stops).
4. Within 5 seconds, on the new remote, press the corresponding button (i.e. **UP** if the motor rotates upwards or **DOWN** if vice versa).

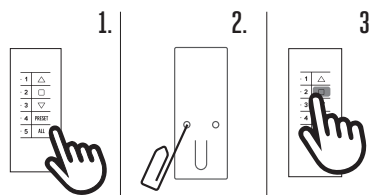
Additional remote is now added.

#### CHECKING/CHANGING DIRECTION

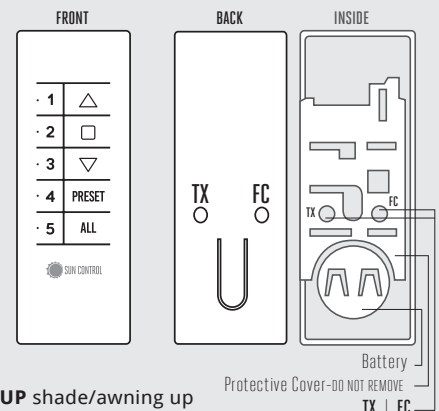
**IMPORTANT:** change direction must be performed before starting limit setting otherwise limits must be reset.

1. Press **UP** or **DOWN**: The motor will go up or down, otherwise to change direction.
2. Press and hold **TX** button until the motor starts moving.
3. Press **STOP**: The motor makes a brief jog.

Direction of motor has been reversed.



Programming remotes and setting the limits are made through the buttons shown below.



- UP** shade/awning up
- STOP** shade/awning stops
- DOWN** shade/awning down
- PRESET** intermediate position
- ALL** selects all channels
- 1, 2, 3, 4, 5** select channel
- TX** program remote
- FC** set limits

△	UP
□	STOP
▽	DOWN
PRESET	
ALL	

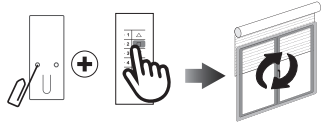
BRIEF JOG	LONG JOG
Change direction of buttons	
Delete a single remote	
	Erase memory
Set limit positions	
End programming mode	
Set intermediate position	Erase intermediate position

# PREMIUM REMOTES POWERED BY SW SUN CONTROL

## PROGRAMMING REMOTES CONT.

### ERASING Remotes

Push **TX** and **STOP** simultaneously until the motor makes a brief jog in both directions.

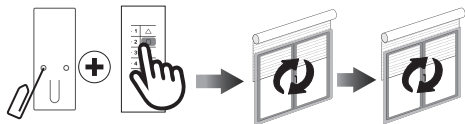


Only the remote used for this procedure has been deleted from motor memory.

### RESET MOTOR MEMORY

#### Option 1

Using a programmed remote, press and hold both **TX** and **STOP** buttons until motor makes first a brief jog, wait for a second long jog to reset motor memory.

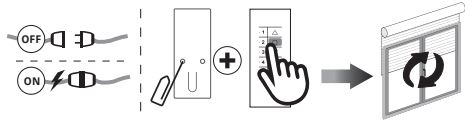


Memory is now empty.

#### Option 2

Using a new remote (not programmed), power **OFF** motor (unplug), then power back **ON** (plug in).

Within 8 seconds, using any remote, press and hold **TX** and **STOP** buttons until the motor makes a long jog.



Memory is now empty.

### LIMIT SWITCH SETUP

(Motors with electronic limit switch only). ALWAYS SET THE UP LIMIT SWITCH FIRST.

1. Push **FC** until motor makes a brief jog in both directions.

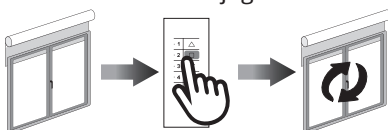


**Note:** during "programming mode" the operations are in "deadman control"

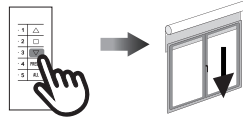
2. Press and hold **UP** button, run motor to desired **UP** limit position.



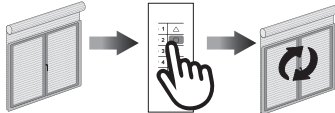
3. Press **STOP** to set **UP** limit position. The motor makes a brief jog.



4. Press and hold **DOWN** button, run motor to desired **DOWN** limit position.



5. Press **STOP** to set **DOWN** limit position. The motor makes a brief jog.



**Note:** Accurate limit setting can be performed when UPWARD or DOWNWARD by pressing **FC** a second time: motor then moves slowly in steps towards desired limit. Always press **STOP** button to set the limit position.

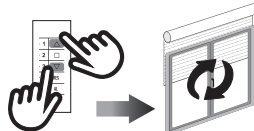
### AUTOMATIC SETTING OF THE LIMITS

(Motors with electronic limit switch only). Limits set with torque sensor (mechanical stop of cassette awnings/shades), press and hold **UP** button until the bottom bar hits the cassette or shade box.

A short jog indicates the **UP** position has been memorized. The same procedure can be followed for **DOWN** limit **but only for roller shades**.

### INTERMEDIATE POSITION SETUP

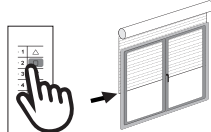
(Motors with electronic limit switch only). Stop the shade/awning in the desired intermediate position, then simultaneously press the **UP** and **DOWN** buttons until the motor makes a brief jog in both directions.



The intermediate position has been set.

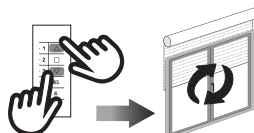
### RECALLING THE INTERMEDIATE POSITION

Keep the **STOP** button pressed at least for 3 seconds: the shade/awning will move until it reaches the intermediate position.



### ERASING THE INTERMEDIATE POSITION

Press simultaneously the **UP** and **DOWN** buttons until the motor makes a brief movement in both directions.



### CHANNEL MANAGEMENT

The channels are selected by pressing buttons **1, 2, 3, 4, 5** and are indicated by the corresponding LEDs. You can select multiple channels and memorize them by pressing **STOP**.

Once the selected channel / group has been selected, you can run the corresponding motor drive with the **UP, STOP** and **DOWN** keys. The remotes can memorize up to 8 channel group combinations.

Storing additional groups involves the cancellation of channels already stored starting from the earliest.

### SELECTING A GROUP OF CHANNELS

With all LEDs off, press the **ALL** button to select all channels.

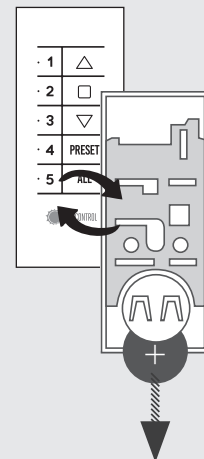
Pressing the **ALL** key again in sequence will repeat the last 8 selected groups according to this sequence:

All channels > 1st group memorized > all channels > 2nd group memorized > all channels > 3rd group stored > ... and so on up to the 8th group.

Once the selected group has been selected, you can run the corresponding motors with the **UP, STOP, DOWN** buttons.

### BATTERY SUBSTITUTION

Remove screw on the back of the cover. Remove the old battery.



Insert the new battery respecting the correct polarity.

**IMPORTANT:** Batteries contain polluting substances. After removing, throw them in the designated batteries collection points.