

HEAVY DUTY SHADE WITH HOUSING AND CABLES

Installation Instructions

1010

Tools Needed
Drill 3/8" Metal Drill Bit 1/4" Masonry Drill Bit Measuring Tape Pencil 4" Level Phillips #2 Driver Manual Screwdriver (Phillips)
Hardware Provided (per shade)
End Caps (Brackets) (2) Housing (1) Shade Fabric Tube (1) Side Rails (2) Deco Caps (6-8) Hand Brace (1)
Hardware Needed
5/16" X 4 1/2" Lag Screws or Appropriate (4 or more) 3/8" Flat Washers or Appropriate (4 per shade) 2 1/2" Drywall Screws (6-8)

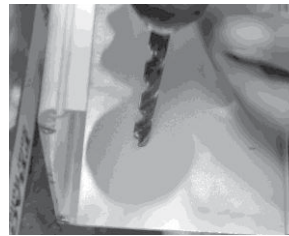
Prepare Back of Housing



Starting at one at end of housing, make two mounting hole marks 1 1/4" in from end cap on your housing.

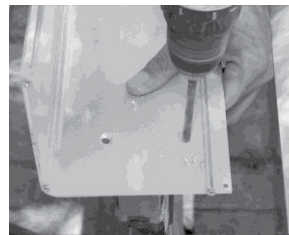


Using a 3/8" metal drill bit, drill the two mounting holes.



Repeat this process on other side of housing with other end cap.

[Note: Top mount holes are on top of the housing, surface mount holes are on back of the housing.]



Pictures above demonstrate surface mount holes.]



SUN CONTROL
RETRACTABLE SHADES
America's Shade Experts

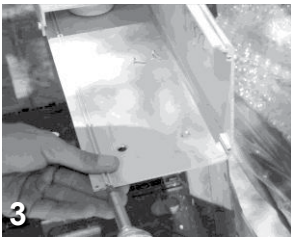
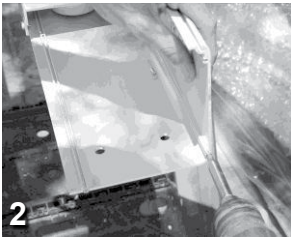
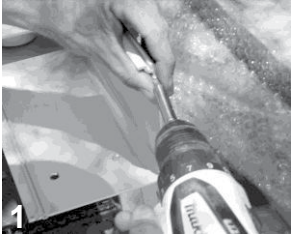
Toll Free 877-792-1775 | Fax 877-792-0031
swsuncontrolpro.com | sales@swsuncontrol.com

HEAVY DUTY SHADE WITH HOUSING AND TRACKS

Installation Instructions

1010

Prepare Back of Housing *(continued)*



[STEPS 1-3]

Start at one end of housing and remove 3 screws attached to housing and set aside.

Repeat same process on other side of housing.

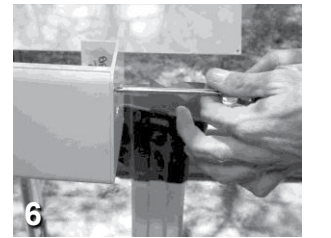
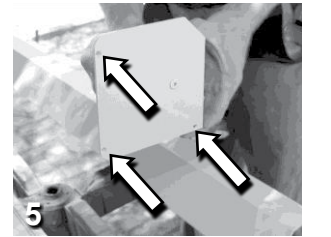
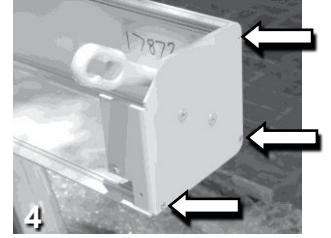
[STEPS 4-6]

Align gear bracket up to screw holes, *(holes you just removed screws from)*

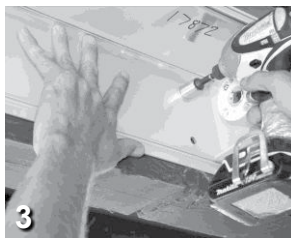
Secure bracket using 3 screws you set aside with Phillips screwdriver.

(Arrows pointing to holes in bracket).

Repeat same process on opposite side with idler bracket.



Hang Back of Housing - 2 Person Job



[STEPS 1-3]

Once you decide where your housing will hang, hold back of housing up to surface and starting on one side, drill starter holes into mounting surface and secure first lag screw and washer on top hole.

Make sure your housing is level. Repeat process on other side of housing.

[STEPS 4-5]

Once housing is secure by itself, bolt your final bottom two lags and washers on each side.

Bolts must be installed in upper corner of box—keep away from the center of the box.

Remove hood screws on both sides of housing located underneath the brackets and set aside.



HEAVY DUTY SHADE WITH HOUSING AND TRACKS

Installation Instructions

1010



Hang Back of Housing - 2 Person Job

Starting on one side, place side rail on flat surface directly underneath housing, making sure it is flush (#1).



Secure the top hole using an appropriate screw for your mounting surface (#2).



Making sure the side rail is level, secure the remaining screws (#3, #4).

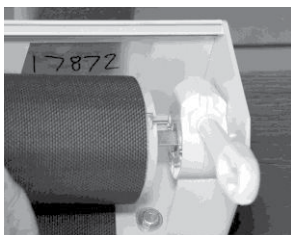
Repeat this process on the other side (#5).



Hang Tube With Fabric - 2 Person Job

Hold tube with fabric up to back housing.

Before installing tube, first insert bottom slats of shade into side rails on both sides.

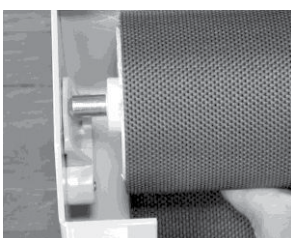


Remove bolt from cradle idler and place white bearing on round pin.

Starting on gear end, insert square pin end of shade tube into hole in end cap bracket.

On opposite side, slide round pin end of tube into cradle idler end cap slot.

Replace bolt on cradle idler to lock in place.



Test Shade



Slide hook end of hand brace into eyelet of gear on shade.

Rotate hand brace in one direction to raise.

Rotate in opposite direction to lower.

Shade rolls up and down on cable guides.



Install Deco-Caps



NOTE: Skip to step if side rails are a side mount.

Snap caps provided into mounting holes on side rails.

HEAVY DUTY SHADE WITH HOUSING AND TRACKS

Installation Instructions

1010

Install Front/Bottom Housing

Before securing front housing, first rotate gear to lie vertical

Install the two hood screws you put aside earlier, one on each side.



Set the housing into the groove at the top and bring down to set into place.



Your set up should now be complete and look like this.

Operate Shade

Slide hook end of hand brace into eyelet of gear on shade.

Rotate hand brace in one direction to raise.

Rotate in opposite direction to lower.

Shade rolls up and down on cable guides.

